

Revolutionary HD Technology

Introducing Wireless 1080p

- WiSe™ Wireless Platform
- 1288 HD 3-Chip® Camera
- L9000 LED Lightsource
- SIDNE® Device Control
- SDC Ultra Digital Capture



Simplifying Today's OR

As medical video technology continues to evolve and the visual demands of today's operating room increase, Stryker has once again responded by raising the bar with revolutionary HD technology – the first wireless technology on the market and Stryker's third-generation of high definition (HD) video products.

This new visualization platform features the WiSe™ Wireless Platform, 1288 HD 3-Chip® Camera, and the L9000 LED Lightsource. This revolutionary platform, coupled with the SDC Ultra Digital Capture and SIDNE® Device Control Systems, offers hospitals an unparalleled and incredibly innovative video system which delivers exceptional results that will help surgical teams provide the best in patient care.



Restructuring High Definition

WiSe™ HDTV and Vision Elect™ HD Flat Panel Monitors

Designed specifically for the surgical environment, the WiSe™ HDTV and Vision Elect™ Flat Panel Monitors are the ideal complement to the 1288 HD Camera, offering exceptional video quality in both 21 inch and 26 inch displays thus providing a multitude of options. The WiSe™ HDTV and Vision Elect™ Flat Panel Monitors combine versatility with a brilliant picture to provide precise, lifelike images in the OR.



1288 HD 3-Chip® Camera

The 1288 HD, Stryker's third generation high definition 3-Chip camera, delivers an unsurpassed 1080p resolution with optimum depth of focus, and edge-to-edge clarity and sharpness for surgeons. It also features an intuitive touch screen, fully programmable camera head buttons and the ability to control the L9000 LED Lightsource from the camera head. The 1288 HD 3-Chip® sets a new standard in visualization products for the OR environment.



L9000 Lightsource

This new LED technology will completely change the perception of lightsources in the operating room. The long life expectancy of the LED bulbs will drastically reduce the overall cost of ownership while reducing the environmental waste and increasing the patient safety.



SDC Ultra

The SDC Ultra High Definition Information Management system provides cutting edge features and versatility to the Operating Room. Perfect for education and teaching purposes, the SDC Ultra captures both images and videos in Native Resolution High Definition. The Ultra supports dual channel video inputs, as well as the ability to save/archive information to multiple types of external media, including the 250 GB internal hard drive.



SIDNE® Suite

Ideal for the I-Suite® environment, SIDNE® Suite specifically provides system integration for device control. This intuitive system makes it possible to utilize device control functionality from a centralized station within the OR.





Introducing Wireless 1080p

WiSe™ HDTV Transmitter

The WiSe™ HDTV Transmitter is the core of Stryker's ground breaking wireless 1080p video transmission platform. Combined with the WiSe™ HDTV Flat Panel Monitor, uncompressed 1080p video signals can be displayed wirelessly virtually anywhere within the OR. WiSe™ Token Keys create unique codes between monitors and transmitters to protect wireless signal quality from interference with other OR devices. This simplistic linking process provides secure and exclusive wireless video transmission channels.



Features & Benefits:

- Wireless 1080p HDTV resolution
- Simple linking system for wireless video transmission
- Increased visualization freedom
- Eliminates need for costly traditional cables

The Clear Choice for HD Visualization

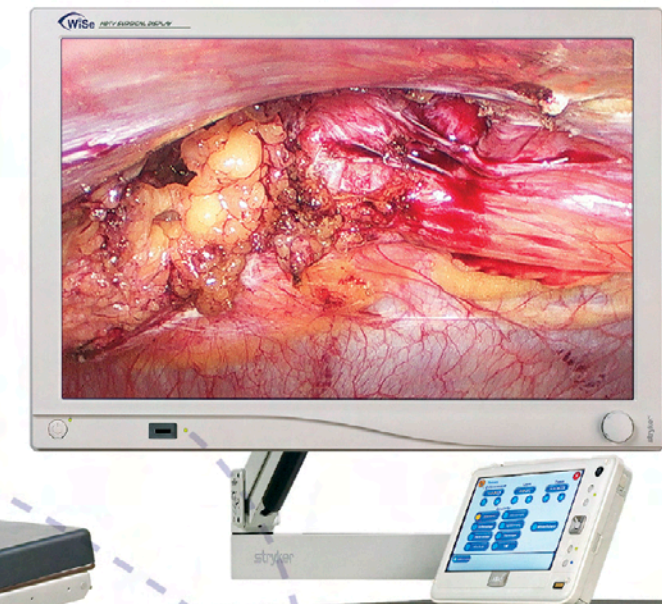
WiSe™ HDTV Surgical Display

Stryker builds upon its visualization expertise with the WiSe™ HDTV Flat Panel Monitor, the first wireless 1080p flat panel in the medical field. WiSe™ HDTV brings revolutionary technological advancement and financial benefits to the OR. Uncompressed 1080p is transmitted wirelessly to eliminate cable clutter and potential costly repairs to traditional flat panels. WiSe™ HDTV will deliver optimal surgical images with unsurpassed resolution, brightness, and optical clarity.

Features & Benefits:

- 1st Wireless 1080p Flat Panel Monitor in the Medical Device Industry with FDA 510(k) clearance
- 26" high definition display provides bright and clear surgical footage
- Freedom to move the flat panel anywhere within the OR
- Ergonomic user interface allows consistent operation under any OR condition
- Multiple video inputs: DVI, VGA, HD/SD-SDI, C-Video/SOG, S-Video, Component, Optical (optional)

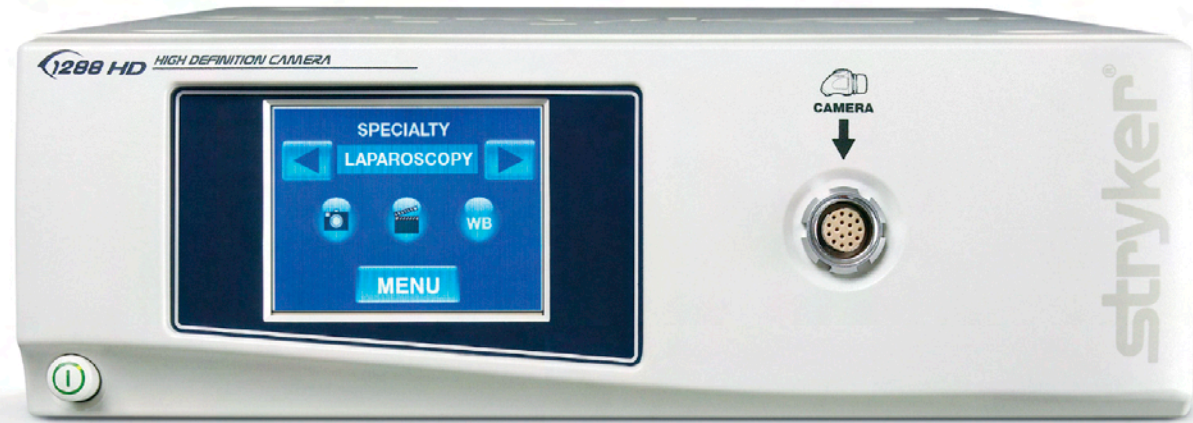
802.11n



The Evolution of High Definition Technology

1288 HD 3-Chip® Camera

As the third generation in Stryker's HD 3-Chip® camera line, the 1288 HD 3-Chip® Camera features a 1920x1080p resolution along with nine specialty settings, resulting in optimum color resolution and brightness. Additional benefits of the 1288 HD 3-Chip® Camera include wireless transmission capabilities, four fully programmable buttons on the camera head, HD and HDTV outputs, and a touch screen LCD interface for easy navigation. By allowing for backwards compatibility with past generation digital capture devices, scopes and various flat panels, while also offering future capabilities with an optional fiber optic board, the 1288 HD 3-Chip® Camera continues to offer new solutions for improved visualization within the OR.



1288 HD 3-Chip® Camera Heads High Definition Standardization

1288 HD Urology 3-Chip® Camera Head

- 90° cable cable design for Urology, Gynecology & ENT procedures
- Rotating integrated 20mm coupler
- Built-in beam splitter provides direct eye viewing
- Ergonomic and light weight design



1288 HD 3-Chip® Regular Camera Head

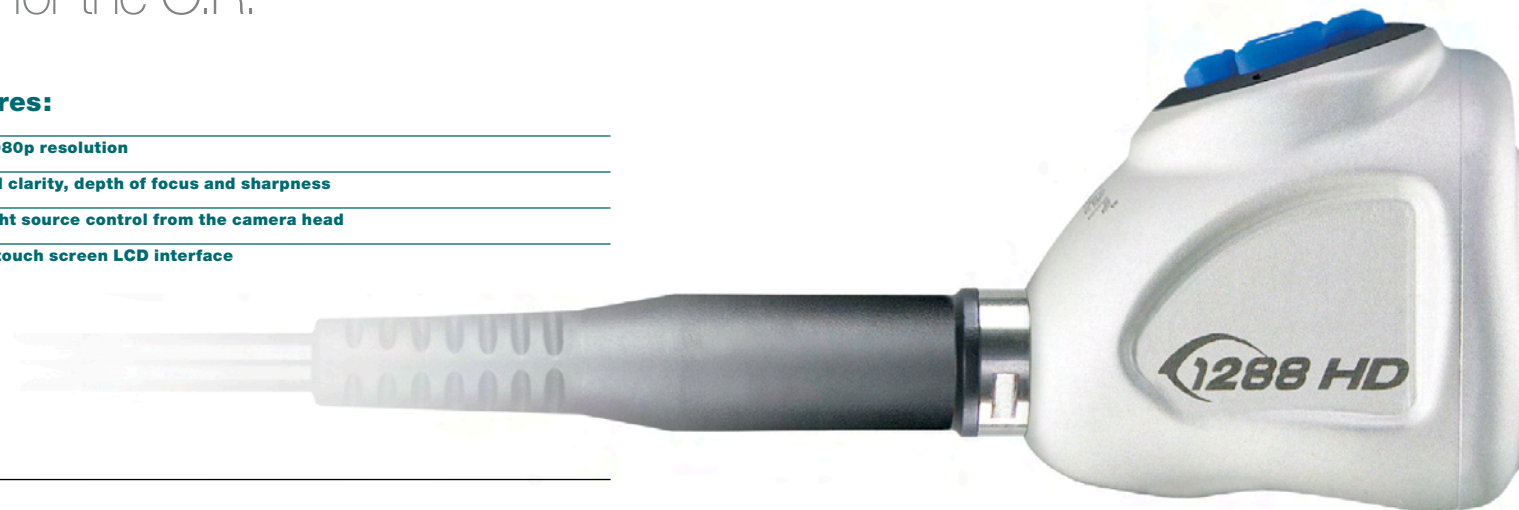
- Ergonomic design for multi-specialty use
- Easy to rotate 20mm coupler design
- Fully programmable four buttons



Unparalleled Resolution And Clarity for the O.R.

Features:

- 1920 x 1080p resolution
- Enhanced clarity, depth of focus and sharpness
- L9000 light source control from the camera head
- Intuitive touch screen LCD interface



1288 HD Inline 3-Chip® Camera Head

- Optimum design for Endoscopic Vein Harvesting
- Fully programmable 4 buttons
- Easy to rotate 20mm coupler



Fully programmable buttons



20mm durable coupler with a single-hand focusing design



Ergonomic cable connector for reliable connection

Light

Unlike Ever Before

L9000 LED Lightsource

Now an eco-friendly and cost-savings OR device, the L9000 LED Light Source reduces the environmental waste by eliminating the need to change the LED light bulb. The new design and Safelight™ technology within this light source provides a cooler light emission during procedures, making the device safer and more efficient for both the patients and OR staff. As an added benefit, the Safelight™ technology ensures that the light source goes into standby mode when the light cable detaches from the Safelight™. This will minimize injury to the patient and provide added protection in the OR.



Features:

- Intuitive simple user interface with LCD touch screen
- Control from the 1288 camera head
- Reduced lifetime ownership cost
- Increased patient and OR safety with Safelight™ cable

SIDNE® Suite...

The Ease of Integration

Simple Device Control

Ideal for the i-Suite® environment, SIDNE® Suite specifically provides touch panel integration for device control.

- Control from a centralized station within the i-Suite®
- Capable of additional methods of device control through voice activation and wireless tablet upgrades



SIDNE® Link...

The Freedom of Movement

Wireless Flexibility

SIDNE® Link is specifically designed for the unique needs of the cart market.

- Control from the completely wireless tablet's touch screen interface
- Capable of additional device control through voice activation upgrade



SIDNE® Voice...

The Essence of Control

Hands-Free Command of the OR

Hands free voice activation upgrades are available for both SIDNE® Suite and SIDNE® Link through the advancements in SIDNE® Voice. This modular piece brings flexibility to the OR with superior voice recognition to control surgical equipment from the sterile field.

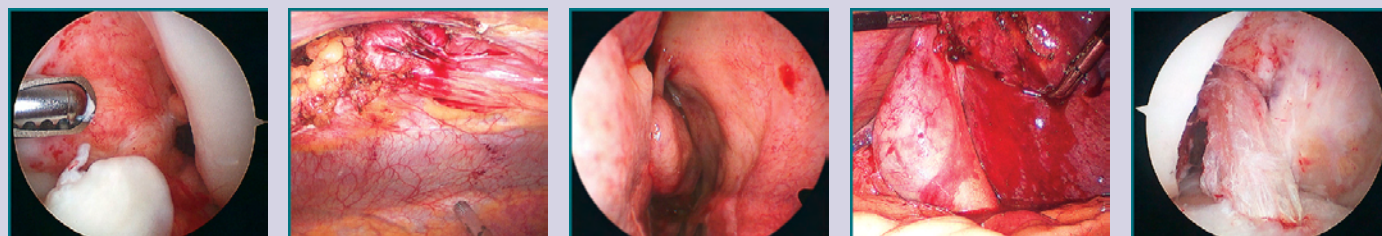


Voice Recognition Technology

Using state-of-the-art voice recognition, SIDNE® eliminates the need for voice cards or voice training. Dual audio inputs allow two surgeons to use voice control simultaneously. In addition, SIDNE's superior video capability gives surgeons the ability to see text overlays while viewing high resolution video and analog signals.

O.R. Standardization

The 1288 HD Camera System continues to offer true standardization within the Operating Room



Cutting Edge Technology

for the High Definition Operating Room

SDC Ultra

The Final Piece to the Puzzle

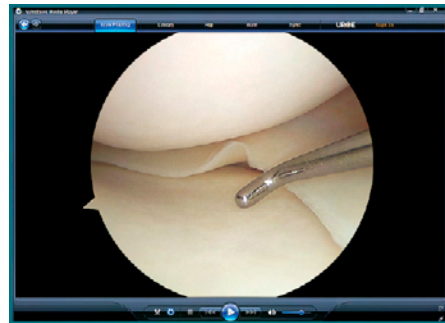


SDC Ultra

HD Information Management System

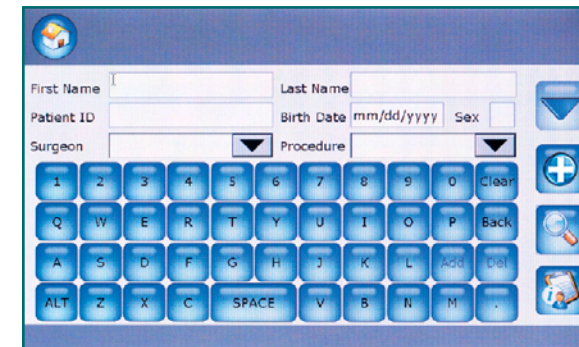
Dual-Rotation Integrated Touchscreen

- Provide flexibility to OR workflow and design
- Dual Rotation Touchscreen for optimal visualization from any angle



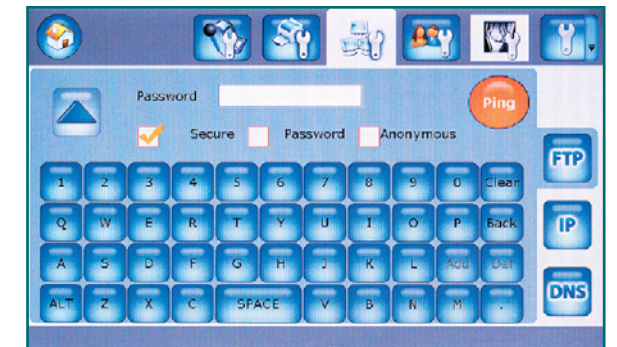
Native HD Video Capture

- Record surgical footage in Native HD Resolution
- Perfect for use in teaching, conferences, and presentations
- Unprecedented quality in surgical video



Front-Load Patient Scheduling:

- Pre-load patient information for a day's worth of cases
- Easily select patient by convenient drop down menu in the capture screen
- Reduce time and effort between cases for surgical and nursing staff



Full Network Integration:

- Interface with Hospital PACS and FTP Networks
- Save and Retrieve case information from hospital networks/servers
- Auto-Populate patient information from hospital system for accurate medical records



Redesigned Graphic User Interface

- Control the SDC Ultra from the LCD Touch Screen
- Intuitive, easy to use
- Icon Driven user interface



Dual Channel Input Support

- Input/Display two separate video signals
- Capture images and record videos on two separate channels, in synchronized mode, or in PIP format
- On-Screen Picture in Picture to display multiple video signals



Easily Customize Annotations, Specialty, & Procedure:

- Annotate images and videos from preloaded list in the album
- Organize annotations and case information by Specialty and Procedure
- Add customized procedures and annotations with one easy step



Archive:

- Archive every case with images and videos to the internal 250 GB Hard Drive
- Review, Reprint, and Resave case information from the archive
- Safeguard your hospital - Don't lose another important case

Joint Replacements

Trauma, Extremities & Deformities

Craniomaxillofacial

Spine

Biologics

Surgical Products

Neuro & ENT

Interventional Pain

Navigation

Endoscopy

Communications

Imaging

Patient Handling Equipment

EMS Equipment

Stryker Endoscopy
5900 Optical Court
San Jose, CA 95138
t: 1 800 624 4422 f: 1 800 729 2917

www.stryker.com

The information presented in this brochure is intended to demonstrate a Stryker product. Always refer to the package insert, product label and/or user instructions before using any Stryker product. Products may not be available in all markets. Product availability is subject to the regulatory or medical practices that govern individual markets. Please contact your Stryker representative if you have questions about the availability of Stryker products in your area.

Products referenced with [™] designation are trademarks of Stryker.
Products referenced with [®] designation are registered trademarks of Stryker.

Literature Number: **1000900567 (Rev. F)**
VID/FWG 5k 01/09

Copyright © 2009 Stryker
Printed in USA